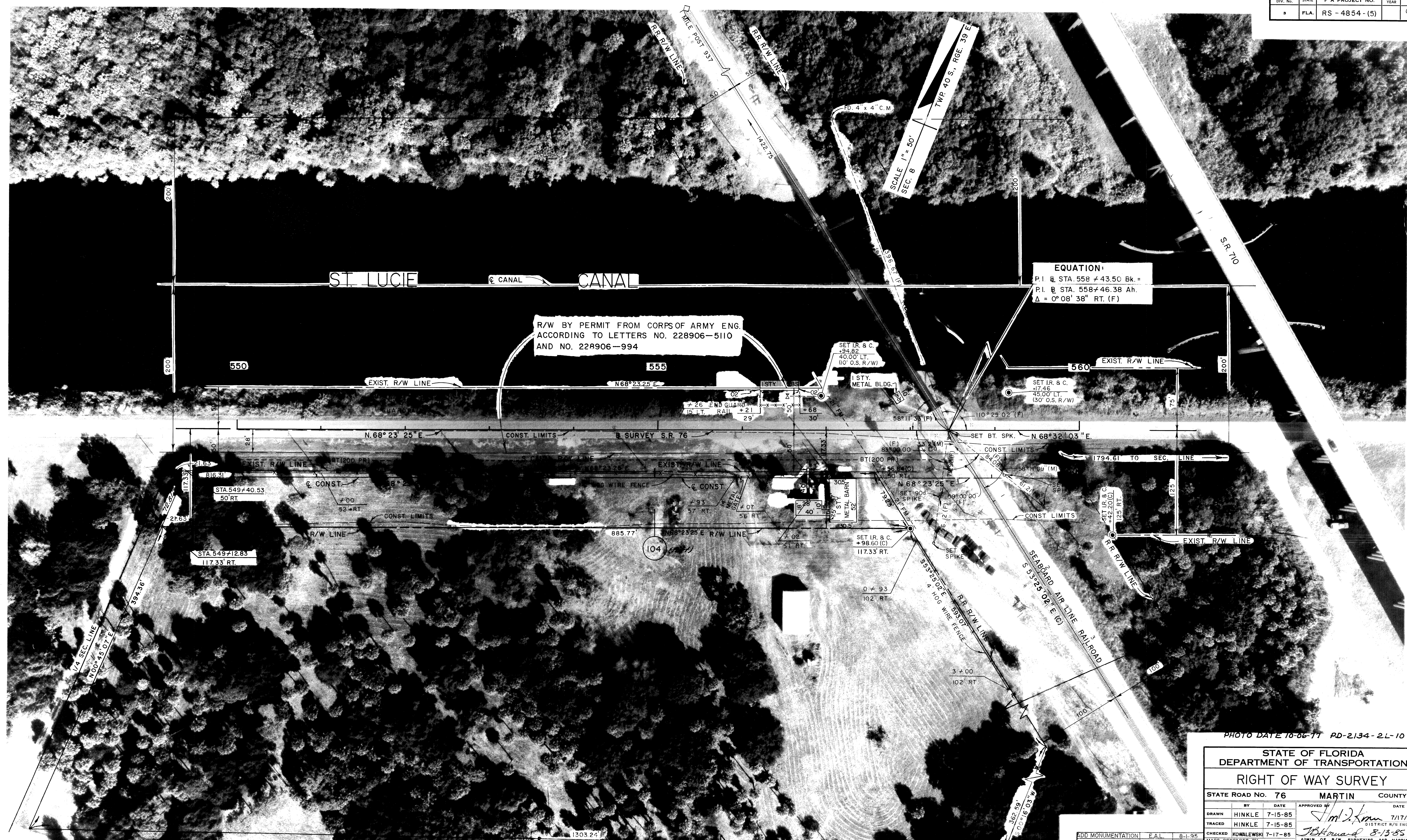


FED. ROAD DIV. No.	STATE	F A PROJECT NO.	FISCAL YEAR	SHEET No.
3	FLA.	RS - 4854 - (5)		9



R/W BY PERMIT FROM CORPS OF ARMY ENG. ACCORDING TO LETTERS NO. 228906-5110 AND NO. 228906-994

EQUATION:  
 P.I @ STA. 558 + 43.50 Bk. = 17.46  
 P.I @ STA. 558 + 46.38 Ah.  
 Δ = 0° 08' 38" RT. (F)

PHOTO DATE 10-06-77 PD-2134-2L-10

STATE OF FLORIDA DEPARTMENT OF TRANSPORTATION			
RIGHT OF WAY SURVEY			
STATE ROAD No. 76		MARTIN COUNTY	
BY	DATE	APPROVED BY	DATE
DRAWN	HINKLE 7-15-85	<i>J.M. Kowalewski</i>	7/17/85
TRACED	HINKLE 7-15-85	DISTRICT R/W ENGINEER	
CHECKED	KOWALEWSKI 7-17-85	<i>J.B. Howard</i>	8-13-85
MAPS PREPARED BY		ADMIN. OF R/W SURVEYING AND MAPPING	
DISTRICT 4		FIELD BOOK NO'S 1009746,	
W.P.I. NO. 4116124		1017764, 1010298, 1018530, 1017763	
SECTION 89060-2508		SHEET 9 OF 17	

NOTE: ALL DISTANCES AND ANGLES FOLLOWED BY (M) ARE BASED ON FIELD MEASUREMENTS MADE DURING THE R/W MONUMENTATION SURVEY.

(SEE SHEET I FOR NOTES, SURVEYOR'S NOTES, & SURVEYOR'S CERTIFICATE)

○ DENOTES R/W MARKER (SET I.R. & C.)

ADD MONUMENTATION	E.A.L.	8-1-85
Revise Parcel 104	Conrad	11-28-88
MISC. CHANGES	D.K.	8-24-87
Misc. Changes	Res. Inf. T.L.B.	11-17-86
REVISION	BY	DATE